

The Prince Edward Pacer

Volume 1, Issue 4

February, 2010

Dates To Remember

Tuesday, February 9th
Hundredth Day of School
Gr 1 & 2

Friday, February 12th
Valentine's Dance Gr 7-8
1:30—3:30 pm

Wednesday, February 17th
100th Day
Kindergarten

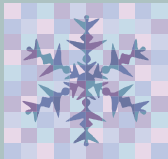
Monday, February 15th
Family Day
No School

Thursday, February 18th
Community Day
Resiliency

Friday, February 19th
6U Bake Sale

Wednesday, February 24th
Kindergarten Open House
5:00—6:30 pm

Friday, February 26th
PA Day
No School For Students



Principal's Message

Dear Parents/Guardians,

On February 18th, we will be having our Community Building Day. Each class will consist of two students from each grade. The classes will be rotating through community building, curriculum related activities. Our goal is to create a community atmosphere where all students can contribute to our safe and peaceful environment!

We are very excited at Prince Edward to be selected for the Full Day Learning Program. Junior and Senior Kindergarten registration will be during the weeks of February 22nd to March 5th. If you are in the Prince Edward area please contact the school to make an appointment.

A reminder about inclement weather— Please tune to AM 800 for information about school closures.

A reminder that our Big Idea for Term 2 is resiliency. Ask your child about what they have learned about being resilient. A great discussion can happen at home when watching the Winter Olympics. A successful education begins with a strong school/home connection. Please come by our next school council meeting to find out more exciting events that are happening at the school.

We look forward to a fantastic February!

R. Romano



February's
February's
Theme:
Theme:
Caring Hands

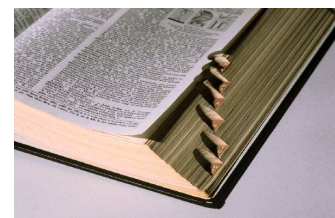
Characteristics we will be looking for:

- Performing actions in the school to assist the younger students
- Having an emotional investment in the safety of all students
- Being careful and precise, and acting in a way that creates a safe and peaceful school environment for all students
- Attentive listening to fellow classmates and staff with your eyes, ears and heart

Prince Edward Schoolwide Words

February's Words are...

1. Authentic
2. Collaborative
3. Perspective
4. Compassion
5. Empathetic



Office Corner

You may have noticed a new shelf in the hallway outside the office. This shelf has been designed to allow parents to drop off forgotten items and lunches so their child can pick them up. Parents will notice a pen and sticky notes there to label your child's belongings. Students will be reminded to check the shelf if they know they have forgotten something.

Thanks with your assistance in minimizing classroom disruptions.



Sign Out

The office will now be having parents and guardians sign students out when they pick them up during the instructional day. This process will assist us in ensuring your child is safe.



Wasteless Wednesdays

Much of the trash we produce here at school comes from student lunches. Our school Eco Team, The Earth Patrol, wants us all to make less garbage. That's why they are promoting **Wasteless Wednesdays**. Students who bring in a litterless lunch on Wednesdays will be given a ticket for a chance to win a prize on Thursday morning announcements.

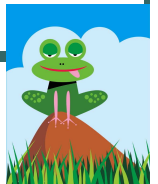
Want to **SAVE MONEY** and **HELP THE ENVIRONMENT**? Here's how:

1. **Reusable Containers** - Buy them once and use again and again. You will no longer have to buy plastic wrap or baggies. Even used margarine or other containers can be used.
2. **Buy in Bulk** - Bulk items usually cost less and have less packaging. Ex., instead of buying individual tubs of yogurt, buy the big one and bring small portions in reusable containers.
3. **Bake Together** - Make it part of your family fun time to bake muffins and cookies. They cost less, contain no unhealthy preservatives, and do not come wrapped in packaging.
4. **Eye Spy** - If your child's lunch items come back in resealable containers, you will get an idea of what does or does not get eaten. Then you can adjust the portion size to meet your child's appetite. You have no idea how much food gets thrown out every school day!

We realize that this may be a change for some families and that change takes time. The Earth Patrol is here to support you. In fact, they have circulated the school handing out **free reusable lunch bags**.

A huge thanks goes out to the **Dairy Farmers of Ontario**, **Stitchy Lizard Embroidery** company, **Mountain Equipment Co-op**, and **Snack Taxi** for their kind donation of reusable lunch items. Check them out on the web. What a huge boost they have given us. If your child still needs a lunch bag, have them see Ms. Walker during the school day.

LET'S ALL BE PROUD PACERS FOR THE PLANET!



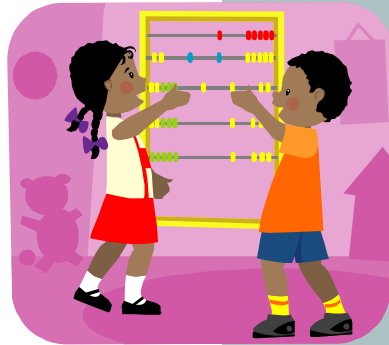
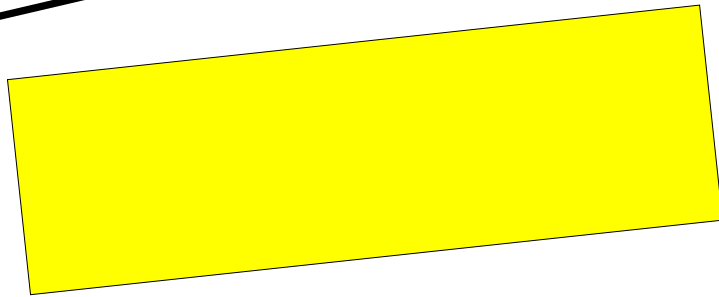
Prince Edward School's Kindergarten Open House

Is your child 4 years of age on or before Dec. 31st, or 5 years of age and never been registered in school?
If so, please join us!



When: February 24th, 2010

Time: 5:00–6:30 p.m.

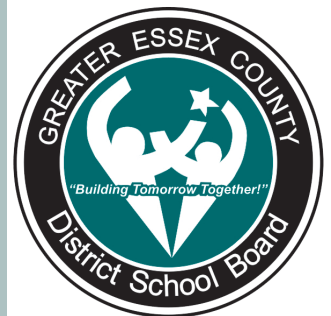


Registration can also take place during the two weeks commencing Feb. 22nd by calling for an appointment.

Please bring your child's Birth Certificate,
Immunization Records and Health



Visit our website at
www.gecdsb.on.ca
for more information.



Registration is for Junior Kindergarten and **NEW** Senior Kindergarten students. If your child is currently enrolled in Junior Kindergarten you do not need to register for Senior Kindergarten.

SWIS Corner

Dear Parents,

This is the time for filing your income tax returns. Even if someone has no income to report or income tax to pay, it is still a good idea to file a tax return. Doing so gives you the opportunity to apply for certain government programs and claim tax benefits.

NCCE Inc. will conduct various income tax clinics to help low-income clients and first time filers to complete their income tax return at no cost. A schedule of location for clinics will be available in the beginning of February. Please contact your NCCE Inc. settlement worker Tina Chen at 519-258-4076 Ext.1402 for more information.

Important Dates for filing 2009 Canadian Personal Income Tax Return:

*February 2010

Starting February 2010, a printed copy of the 2009 General income tax and benefit package will be mailed to you by calling the CRA at 1-800-959-2221. You can also obtain the General tax guide and tax forms from any postal outlet or Service Canada office near you.

*February 15, 2010 to September 30, 2010

The NETFILE transmission service is open, for the electronic filing of 2009 personal income tax and benefit returns. **Tax returns filed via NETFILE must first be prepared using one of the 2009 commercial tax preparation software packages or Web applications certified for NETFILE.**

Specifically Certified Software for the 2010 NETFILE Program (2009 tax return) include:

Windows: [Future Tax](#), [Tax Freeway](#), [TaxTron](#)

Web applications :(for Windows and Macintosh)[Tax Chopper \(formerly CuteTax Online\)](#)

Macintosh: [TaxFreeway](#)

*March 1, 2010

RRSP Deadline for contributing to Registered Retirement Savings Plan (RRSP) for the 2009 tax filing year.



Pacers Care!!
As a school, we were able to raise over \$1000 for Haiti which will be matched by the Canadian government. Way to go, Pacers!

Happy February!

